

# Mobile Young Persons Have Different View Of Parks

By TIM RICHARD  
(Second of a Series)

For society as a whole, parks are a problem, generally because there aren't enough of them, they're getting crowded, and they're getting costlier to buy and maintain.

But there is a particular problem with the use of parks by people in the 15-25 age bracket. These young people are often dissatisfied with or have outgrown the traditional energy-sapping recreation programs that seek to send them home so they don't get into trouble.

On the other hand, adults have their gripes about the way young people behave, and taxpayers often retaliate against the New Generation by tightening the pursestrings for—and even closing up—the parks.

As one lady wrote to the editor when opposing a proposed park site near her home: "We don't want any long-haired hippies around here." By "we," or course, she meant her particular property-owning and age group, young people were implicitly dropped into the ranks of non-citizens, even when those "long-haired hippies" were the neighborhood kids.

## analysis

**CONFRONTATIONS** between young people and authorities have occurred in Observeland, across the state and throughout the nation. Why? Eliminating outright criminality as a factor except in a small minority of cases, the reasons boil down to the social and legal:

(1) Socially, young people have far different uses for parks than do parents and tots. (2) Young people have a far different view of what is legally and morally wrong, and their view almost guarantees them trouble with the police.

The "young people" are high school and college students and persons new to the labor force. They are unmarried and generally live with their parents. They have yet to establish their own households, hence don't care to go "home."

They don't have a lot of loose cash to spend in a place of commercial entertainment. In the last three summers, they've had trouble finding jobs. Their hangouts used to

be drive-in stands, but clever new zoning ordinances have prohibited drive-ins.

The young people nevertheless are highly mobile. If they don't own their own cars, they can get a family car or pile in with friends. They turn up their noses at municipal boundaries and share none of their parents' snobishness. They are a separate social class. A different set of attitudes toward work, money, religion, politics has been deliberately cultivated and absorbed. Despite the old bromide that "kids have always been like that," this generation is in fact different.

Given this social function of parks, given the young people's different attitudes about laws and ordinances, the whole matter is complicated by the young people's tendency to accumulate in groups of several hundred, be it in Detroit's Stoenep Park, Livonia's Botsford Park, Cass Benton Woods, "The Horseshoe" or Northland.

The point here is that the parks problem is more than a problem of acreage and picnic tables. It's a people problem. It isn't solved when (for example) voters in Livonia refuse to put up money for parks or police chiefs in Redford Township and the City of Plymouth want to close parks earlier.

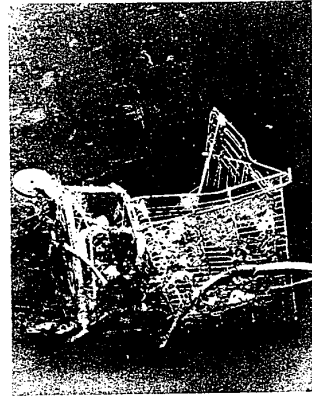
"Cleaning out" a park rarely solves a problem, in the overwhelming majority view of the community of "Rap on Parks" participants. In fact, it amounts to municipal failure to meet the needs of a particular social class that the user isn't hurting group.

(Next week — some police problems.)



"NOW WHAT DO WE DO?" ask these Schoolcraft students after observing all the classes which were closed by the time the college's final registration began this week. Classes begin Thursday with late registrations accepted until Sept. 5. (Observer photo by Bob Woodring)

As one lady wrote to the editor when opposing a proposed park site near her home: "We don't want any long-haired hippies around here." By "we," or course, she meant her particular property-owning and age group, young people were implicitly dropped into the ranks of non-citizens, even when those "long-haired hippies" were the neighborhood kids.



**SLIME COLLECTS** on this grocery cart dumped into the Middle Rouge River near Middle Belt Rd. The closest store is the better part of a mile away, on Warren Rd., indicating that someone went to a lot of trouble to make the river dirty. This is one of many sights awaiting volunteers in the Sept. 16 "Rescue the Rouge" project. (Observer photo)

**I'VE MOVED**

**BUD PITTS**  
**NOW IT'S YOUR MOVE**

CHRYSLER MEDALLION SOCIETY MEMBER

And one of the top salesmen in Detroit has made his move so that he can better serve his customers. See Bud at...

**B. J. RATIGAN**  
CHRYSLER - PLYMOUTH  
20277 PLYMOUTH RD.  
LIVONIA 425-8000  
"40 YRS. OF QUALITY SERVICE"

WHERE THE PRICE SHOPPER BECOMES A BUYER

**Jones Get Westdale Post**

Harry H. Jones has been named vice president and general manager of western Detroit operations of Westdale Co., whose main office is located at 2022 Farmington Rd., Farmington. Westdale is one of the nation's largest real estate firms.

A native of Kalamazoo, Jones attended Western Michigan University and Tri State College in Angola, Ind. He earned a graduate real estate institute (GRI) certificate at the University of Jones previously was Michigan.

**STEREOLAND**  
**CLOSEOUT CLEARANCE SALE!**  
**SAVE \$90 THIS WEEK!**

**SONY SUPERSCOPE**

- Solid State 11 Drivers
- Back In Action
- Stereo Indicator Light for 100 Minutes
- 100/100 Stereo System
- The portable version of our Deluxe Model CF-870 Custom Car Stereo System. The scoring CF-870 provides a more comfortable fit, full-bass stereo sound and cassette/tape flexibility, with easy-access compartments.

REG \$289.95 SALE 198.88

**STEREOLAND**  
33111 PLYMOUTH ROAD  
261-8170  
IN THE SHEDDEN SHOPPING CENTER  
MAJOR CREDIT CARDS HONORED - BANK FINANCING AVAILABLE

**FOREST CITY**  
YOU MUST BE SATISFIED • WE GUARANTEE IT!

**Rx FOREST CITY PRESCRIPTION SAVINGS**

We participate in Blue Shield and Med-Mat and PCS. Your prescription is always ready when you call for it. For refills of your prescription, call Livonia 427-6471, or we will be glad to call your doctor.

**Fast, Efficient Service!**  
Price your prescription...then see us! Registered pharmacist on duty at all times!

Wholesale Chains, Crutches, Hospital Supplies, Medical Supplies at Discount Prices:

insulin U40	89¢
insulin U80	1.79
30-day disposable syringe	3.59

**ACT NOW! BUY GE CENTRAL AIR CONDITIONING**

**WHOLE HOUSE CENTRAL AIR CONDITIONER**

- QUIET!
- RELIABLE!
- ECONOMICAL!

GE HEAVY-DUTY HIGH SPEED COMPRESSOR with welded steel shell for leak-proof operation.

SPINE FIN COIL... up to 50% more efficient than conventional coils.

QUICK-ATTACH refrigerant lines make hook-up quick and simple.

TOUGH ENAMEL FINISH... resists weather and corrosion.

TOP DISCHARGE DESIGN... offers quiet discharge of air upward, safeguards shrubs and flowers.

Call us for a free survey and estimate. No obligation.

**SLASOR Heating & Cooling**  
NOW IN LIVONIA - 32235 WEST 8 MILE, LIVONIA  
Call - 477-4392

**Date-Mates cosmetics**  
your choice

**Westab 5 hole punch notebook filler paper**  
28¢

Package of 300 Sheets Compare 67¢

**The Organizer set**  
binder - clip - pad - pockets  
Thin, 3-fold binder. Colors and photographic designs. File compartments. By Westab. Compare 2.88

**38¢**  
\$1 Size

<b>27¢</b>	<b>97¢</b>	<b>5.97</b>	<b>77¢</b>	<b>59¢</b>	<b>67¢</b>
------------	------------	-------------	------------	------------	------------

**Thermos lunch kit**  
with 1/2-pint bottle  
Metal or plastic in choice of designs.  
**1.77** Compare at 2.53

**LIVONIA** 32887 Middlebelt at Schoolcraft  
427-6671  
OPEN MONDAY THRU SATURDAY 9:30-5:30 • SUNDAY 11:30 A.M. to 5:30 P.M.

**FOREST CITY**