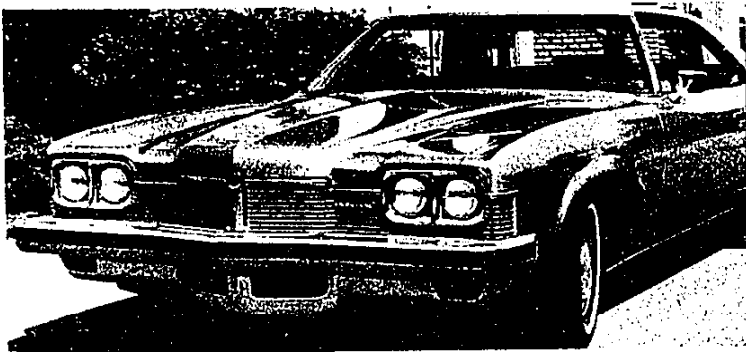


**NEW SPORTY GRAND AM** -- Topping the Pontiac intermediate line for 1973 is the stunning new Grand Am, which incorporates classic styling with unique ride and handling characteristics. A "soft nose" front end design uses flexible molded urethane which deflects but returns to original shape after being impacted at parking lot speeds in much the same way as a rubber volleyball. The fixed rear quarter window on the Grand Am coupe features body-colored or top-colored louvers.



**1973 CATALINA** -- The popular Catalina has all-new front end sheet metal with the grille extending the full width of the front providing a strong horizontal theme. The Catalina has a front bumper system which meets the requirements of the Federal bumper standards by being completely self-restoring in a five-mile-per-hour barrier test. Bumper guards and rub strips are available.

**THIS IS IT!**

**THE DEAL of THE CENTURY.**  
**'73 BUICKS AT '72 PRICES!!**

**RIVIERAS • ELECTRAS • LeSABRES**  
... for immediate Delivery

**JACK SELLE** Buick OPEL **453-4411**  
200 ANN ARBOR RD., at Lilley, Plymouth

**TAKE THE KEY TO A '73!**

**THE ONLY WAY...**  
to really check out a new 1973 Chrysler or Plymouth is to take it for a spin! We have a great selection of new cars in stock right now...

Dusters, Satellites, Furys and Chryslers --  
*Immediate Delivery -- Come in Today.*

**TAKE THE KEY...AND THEN YOU'RE HOOKED...** for life to a Chrysler-Plymouth Product and that is a very pleasant way to be.

**B. J. RATIGAN**  
**CHRYSLER-PLYMOUTH, INC.**  
30777 PLYMOUTH ROAD, LIVONIA  
(Between Middlebelt & Merriman) **425-5800**  
"IN THE HEART OF LIVONIA . . ."

**WHERE THE PRICE SHOPPER BECOMES THE BUYER**