

Eclectic Decor Needn't Be 'Hodge-Podge'



OFF-BEAT COLOR SCHEME is the idea behind Designer Robert Whitman's bedroom, with vibrant shades of color found in the most beautiful flower gardens. It combines the colors your mother told you wouldn't work ... and makes them work beautifully.

Eclectic is a fascinating idea ... but every time YOU try it, it seems to turn out "hodge-podge."

Taking what appears to be the best of various styles or colors is an art -- and the whole business of going eclectic is one of the most exciting adventures in home decorating today.

"It's easy for decorators," you say. "But how can I make it work?"

Simply by using a thread of continuity.

This is not as paradoxical as it sounds.

In the anomaly of this newest home furnishings style, you can crossbreed styles, colors, patterns -- do almost anything you feel like. Here's becomes quite acceptable.

What you must remember is that somewhere in your individuality, a central scheme -- a big idea -- holds the pieces together.

If you study the living room by designer Cathy Erb, you'll see oriental tables, a neoteric (add that to your decorator vocabulary!) etagere ... traditional upholstered pieces ... and a French Provincial ceiling.

What makes it go together so beautifully?

If you take a close look, there is a key pattern theme throughout the room -- dis-

monds. They're in the tables, they're in the carpet; they make up the window grillework. There is even a diamond design in the wall-covering and in the upholstery. The diamond pattern unifies the room and still allows the excitement and concealing adventures in home decorating.

What's the big idea in the bedroom? Designer Robert Whitman says: "An offbeat color scheme."

Pick up a color scheme from a decorating book, and you're a student ... pick out a color scheme from a magazine, and you're a copy-cat ... but translate a color scheme from nature, and you're an artist!

If you're afraid to mix red, purple, lavender, orange, and yellow ... you shouldn't be. Mother Nature does it all the time, and she knows it's "not nice to fool" you!

Take a look at the floral arrangement on the elegant dresser. Roses, delphiniums, violets, and marigolds make a fantastic composition.

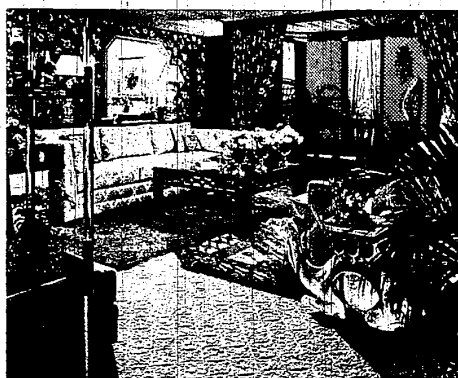
Whitman uses another

simple trick -- mating several shades of the same color family. For example, the plush carpet in lilac highlights the purple in the bedspread ... and the gold of the sitting room walls is picked up in another shade of gold in the plant love seat. The furniture in this room is from Thomasville's Chateau Provence Collection.

Don't be self-conscious about mixing the old with the new. Antique appointments give a new house character and mellowness ... while modern new furnishings update an old house.

Eclectic doesn't mean putting a square peg in a round hole. It means creating the extraordinary ... the uncommon ... the unusual ... with diverse elements based around some central or big idea.

With this in mind, you can start today with your own big idea and create surroundings of a hybrid quality -- and live "eclectically" -- happily -- ever after.



LIVING ROOM COORDINATOR in Designer Cathy Erb's eclectic room is a diamond design. It begins in the Persian Medallion carpeting, runs to the window grillework, into the upholstery, and is found even in the subtle background of the wall covering.

PANELING

DARK LAUAN PRE-FINISHED, V GROOVED

4x7 \$250 EACH

ALSO SECONDS IN

BIFOLD & SOLID CORE DOORS

EXTERIOR

PLYWOOD CUTTINGS

ONE GOOD SIDE

1/2" 16x35 65¢

1/2" 26x34 1/4 11.35

1/2" 12x96 2.10

1/2" 12x96 1.10

JOY LUMBER COMPANY

15505 Beech Daly Road, K.E. 74480

MON.-FRI. 9-5 SAT. 9-4

20% OFF

ALL NURSERY STOCK

349-4950

29 Soil Types Charted In Wayne Land Survey

A three-year survey which charted all the soil types in Wayne County has been completed with a declaration that it "will open a new chapter in Wayne County government's efforts to improve our environment."

Results of the survey will be available from the Wayne County Soil Conservation District office, 206 S. Wayne Road, Westland.

The soil survey covered 230,000 of the 388,000 acres in Wayne County, missing only those acres "irrevocably covered with concrete or buildings," in the words of one survey official.

Among the 29 soil types identified is a previously-unclassified variety found near Belleville and therefore named "Belleville loamy fine sand."

The survey was conducted by the Soil Conservation Service of the U.S. Department of Agriculture and the Michigan Agricultural Experiment Station at Michigan State University. The Wayne County Cooperative Extension Service and the County Planning Commission cooperated in the program.

Half the \$100,000 cost of the survey was granted by the Board of Commissioners,

with the balance underwritten by the Department of Agriculture and MSU.

Robert FitzPatrick, chairman of the county board of commissioners, said the soil survey will serve as a blueprint for planning of green belts and "preservation of our dwindling farmlands."

"It also gives us a guide as to the best locations, from the environmental point of view, for commercial and residential development," he added.

Survey results will be used in the regulatory powers which the county received under the state sedimentation and erosion control legislation passed last year, as well as under anticipated state land use legislation, FitzPatrick added.

FitzPatrick said the county's activities in the field of environmental protection would be stepped up.

He called for stiffer fines for air pollution and to announce he will ask the County Board of Commissioners to establish a Wayne County Environmental Council.

"I believe the state should give the courts in Wayne County the authority to impose the same stringent fines for air pollution that are in force throughout the rest of Michigan," FitzPatrick stated.

"Elsewhere," he added, "violators may be fined \$10,000 for each day of violation. Only in Wayne County is the maximum fine limited to \$100 per day."

Home Repairs Cost Less During Our

LUMBER AND BUILDING SUPPLIES Sale



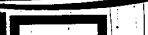
PANELING HEADQUARTERS

OVER 70 DIFFERENT PANELS IN STOCK

AS LOW AS

\$299

C&C



Truckload Sale of Savings

WE'll sell you Owens-Corning Fiberglas Insulation, but what you'll really get is savings of up to \$100 a year on your heating bills. Check your insulation thickness and then bring it up to six inches.

Owens-Corning is Fiberglas

FREE* Rockwell Jig Saw

\$19.99 retail value, double insulated saw. Has 0-45° bevel adjustment, anti-splinter insert.

with purchase of Craftsman or The Weldwood Collection

Hardwood Veneer Plywood Paneling

IF YOU BUY A JIG SAW - WE'LL ALLOW \$19.99 CREDIT TOWARD THE PURCHASE OF ANY ROCKWELL TOOL IN STOCK.

*FREE WITH PURCHASE OF 12 PANELS. With 6 panels pay only \$6. \$1 off for each extra panel bought.

October Special... Free Adhesive!

October Special... Free Adhesive!

October Special... Free Adhesive!

October Special... Free Adhesive!

October Special... Free Adhesive!

October Special... Free Adhesive!

October Special... Free Adhesive!

October Special... Free Adhesive!

October Special... Free Adhesive!

October Special... Free Adhesive!

October Special... Free Adhesive!

October Special... Free Adhesive!

October Special... Free Adhesive!

October Special... Free Adhesive!

October Special... Free Adhesive!

October Special... Free Adhesive!

October Special... Free Adhesive!

October Special... Free Adhesive!

October Special... Free Adhesive!

October Special... Free Adhesive!

October Special... Free Adhesive!

October Special... Free Adhesive!

October Special... Free Adhesive!

October Special... Free Adhesive!

October Special... Free Adhesive!

October Special... Free Adhesive!

October Special... Free Adhesive!

October Special... Free Adhesive!

October Special... Free Adhesive!

October Special... Free Adhesive!

October Special... Free Adhesive!

October Special... Free Adhesive!

October Special... Free Adhesive!

October Special... Free Adhesive!

October Special... Free Adhesive!

October Special... Free Adhesive!

October Special... Free Adhesive!

October Special... Free Adhesive!

October Special... Free Adhesive!

October Special... Free Adhesive!

October Special... Free Adhesive!

October Special... Free Adhesive!

October Special... Free Adhesive!

DO-IT-YOURSELF and \$ SAVE \$

ALUMINUM SIDING, FACTORY SECONDS

FREE INSTRUCTION BOOK! STEP-BY-STEP THE EASY DO-IT-YOURSELF WAY!

12 Earth Tone Colors 12 Styles of Siding 44 Accessory Moldings

PICKERS SPECIAL \$13.50 Sq.

ASH GREEN SIDING \$15.45 Sq.

AVOCADO SIDING \$15.45 Sq.

BROWN SIDING \$15.45 Sq.

CHARCOAL GRAY SIDING \$15.45 Sq.

CREAM SIDING \$15.45 Sq.

DELTAT BLUE SIDING \$15.45 Sq.

GOLD SIDING \$15.45 Sq.

GREEN SIDING \$15.45 Sq.

GRAY SIDING \$15.45 Sq.

REDWOOD SIDING \$15.45 Sq.

YELLOW SIDING \$15.45 Sq.

WHITE SIDING \$15.45 Sq.

TRAILER SKIRTING 10" x 14" \$2.75 Sq.

VERTICAL TRAILER SKIRTING \$2.75 Sq.

COLORED TRAILER SKIRTING \$2.75 Sq.

TOP HALF OF TRUCK CAP \$5.15 Fl.

5" WHITE ALUMINUM CUTTERS \$1.15 Ea.

3" TRACK ALUM. STORM WINDOWS \$1.50 Ea.

STORM DOOR \$1.50 Ea.

ALUMINUM FOL. 500 Sq. Ft. \$1.50 Fl.

WHITE ALUM. BRACKS 10" x 14" \$2.00 Ea.

ALUMINUM BRACKS 10" x 14" \$2.00 Ea.

ALUMINUM BRACKS 10" x 14" \$2.00 Ea.

WHITE ROLLS OF PEAK STICK 8" x 20" x 100' \$2.50 Ea.

ALUM. NAILS 1" to 2 1/2" \$2.50 Ea.

8 to 8 1/2" 8 to 4 Saturday No Sundays

FREE SIDING LOUVER WITH PURCHASE

FLAT ROCK

Aluminum Sales, Inc.

14544 Telegraph Road, Flat Rock

Just 1/2 mile South of Flat Rock



1973

STORM DOORS

3 TRACK STORM ALUMINUM WINDOWS \$11.95

TELEPHONE 782-9890