

# Cancer tests can save lives

By MARY CONNELLY

Many women die needlessly because they procrastinate when it comes to getting a medical examination. The doctor who said this is not trying to use scare tactics to force women to medical attention. It's just one of the facts associated with cancer.

Put off getting checked and you might wind up becoming part of the cancer population group with a reduced survival rate.

IN AN EFFORT to reduce the number of deaths due to breast cancer, the Michigan Cancer Foundation (MCF) began operation of a Breast Cancer Detection Center in January.

According to the foundation, the center, located at 110 East Warren, Detroit, is the only facility in the mid-west where a comprehensive range of breast cancer tests are administered in one location. Twenty women a day are currently walking among the examining rooms and paying a price which the Center's associate medical director calls "a give-away."

The \$40 fee for the detection services is roughly one-third to one-fourth of the cost a private physician would charge for the tests, according to John H. Wank, D.O., the center's associate medical director.

THE CENTER was not designed to put doctors out of business or challenge private medical practices. But it did evolve to help detect breast cancer in women, which is the leading cause of cancer deaths among women in the United States.

"You can do so much for a patient with breast cancer if you pick it up early," said Wank. "Many women die

needlessly because they procrastinate and drag their feet."

"I'M HAPPY" people come in here and get it for forty bucks," said Mrs. Elaine Lesser of Bloomfield Hills, a center volunteer.

Mrs. Lesser works every Tuesday at the center, primarily interviewing patients for their medical histories. Occasionally, she fills other volunteer capacities such as measuring weight and height or assisting patients between examinations.

"You get a lot of women who are nervous," Mrs. Lesser said. "We make them feel comfortable so they get a feeling they're not alone."

AFTER A THREE page medical history is completed, a series of examinations are performed by the center's 18 staff members, assisted by medical aides.

Multiple tests are performed because, according to the MCF, no single test has been found totally effective in detecting breast cancer.

The 90-minute to two-hour examination includes:

- Clinical examination: including breast palpitation, urine analysis and recording of blood pressure, height, weight and temperature.
- Mammography: special mammography or X-ray of the breast which produces finely-detailed images under reduced levels of radiation.
- Thermography: pictures of the varying heat temperatures at the breast surface can signify cancerous developments when higher temperatures are observed at specific locations.

• Pap smear of the breast: evaluation of the cells in fluids of the breast.

• Cervical pap smear: this analysis of cells in cervical fluids is offered in addition to specific breast cancer detection testing.

• Blood tests: sampling and analysis of blood count, type and characteristics.

WOMEN RECEIVING the tests are required to be in the care of a doctor who will receive a copy of the test results.

Test results are monitored by the staff so the center can use the data for research and evaluation of current testing procedures.

IN ITS TWO MONTHS of operation, the cancer detection rate at the center has been high.

The high percentage of cancer detection among the 650 women examined was "not representative of the general population," according to Jeanette Jenkins, administrative director of the center.

"Many of the people we are seeing at the beginning have a history of cancer," she said.

"They are breast cancer conscious," Wank said.

WHEN THE CENTER becomes fully operational administrators expect that more women who do not suspect breast cancer will be served, and the total number of women examined each day will number 40.

MCF is a Torch Drive agency serving the tri-county area.

**chudiks**  
OF BIRMINGHAM

We're Celebrating our 13th Anniversary watch our ads for specials

BROWN STREET IN DOWNTOWN



**SALE... White China Plant Pots, \$8**  
Attractive cover-ups for clay-potted houseplants, pretty planters for ferns and other beautiful growing things... three ceramic imports from Portugal, now at savings. 13" L oblong, 7" H bucket, or 8 1/2" H tulip shapings.

**Jacobson's**  
store for the home  
Woodward at Willits  
Birmingham  
SHOP JACOBSON'S THURSDAY AND FRIDAY EVENINGS 'TIL NINE  
2 HOURS FREE PARKING... WHEN YOU MAKE A PURCHASE

HEAD HEAD HEAD  
WE'RE HAVING A  
**FASHION**  
"SHOW OFF"

**HEAD SPORTSTACULAR**  
"Separates with a very separate identity."

Thursday, March 7th  
at 12:00, 3:30 and 7:00 pm  
Somerset Mall

This totally new Head line of separates will be shown and sold only by the Sporthaus. We've got an area exclusive, and we're proud to share it with you.

Don Thomas  
**Sporthaus**

## Max Sosin honored

Max Sosin, community leader and popular humorist, will be honored at the Metropolitan Detroit Landsmanshaften Purim Celebration at 8:15 p.m. on Monday, March 11, at Congregation B'nai David.

The tribute to Sosin was motivated by the many years he had given of his time and talent, providing services as well as free entertainment to many organizations of the Jewish community.

Abe Dishell, chairman of the Landsmanshaften for Jewish National Fund pointed out that the dedication of a woodland of trees in Israel will take on a deeper and more significant meaning since the wide destruction of forests during the recent Yom Kippur War.

Sosin is a past president of B'nai David Synagogue and an honorary president of Brandeis Lodge of B'nai B'rith.

## Twins' moms swap clothes

The Birmingham-Bloomfield Mothers of Twins Club will hold its annual spring clothing exchange at 7 p.m. March 19 at the Security Bank & Trust Company, 30900 Telegraph Road, Birmingham.

The used clothing exchange will be open to the public at 8:30 p.m. Further information may be obtained from Mrs. James Pawlowski, 1675 Bates, Birmingham, or Mrs. Sharon Gatten, 18006 Templar Circle, Southfield.

## Tots storyhours begin March 5

The next in the Farmington Public Library's series of storyhour programs for pre-schoolers will begin Tuesday, March 5. The program will run through April 9.

Parents may register their four and five-year olds by calling 477-1313.

## Magen David women plan fund raiser

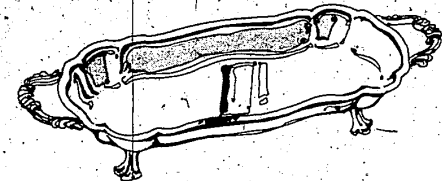
The Women's Committee of the Michigan Region of the American Red Magen David for Israel will hold its next fund-raiser on Saturday, April 27, called "Fun For Funds."

The event will take place in Beth Abraham-Hillel, on Maple Road, in West, Bloomfield, with a schedule of games, a silent auction, dancing, food and a "super carney." The menu will consist of Coney Islands, fried chicken, corn on the cob, make-it-yourself sandwiches and pie.

Dance music will be furnished by Marshall Korby.

Tickets sell for \$25 per couple and may be had by contacting Mrs. Allan Warnick at 353-1450. All of the proceeds will go towards equipment for the Col. David Marcus Blood Fractionation Institute in Israel.

Co-chairmen of the fund raiser are Mrs. Allen Sedg and Mrs. Lawrence Edelheit. Chairman of the auction is Mrs. Carl Cohen.



Silverplated Tray

\$10

save on this gleaming silverplated 14" roll or celery tray which may be used in so many ways. Graciously designed for dining table or gourmet snackables... and an ideal gift for the hostess.

**Jacobson's**  
store for the home

Woodward at Willits  
Birmingham

SHOP JACOBSON'S THURSDAY AND FRIDAY EVENINGS 'TIL NINE  
2 HOURS FREE PARKING... WHEN YOU MAKE A PURCHASE

let's serve  
**CHOCOLATE MOUSSE**

For such a delicious French dessert, our petite Pot de Creme sets... a delightful way to serve Chocolate Mousse, and it takes only 5 minutes to prepare. White English stoneware, 2 1/4" H. Set of six, \$9

In your blender: place 5T boiling water over 6 ozs. of chocolate bits. Blend at high speed for 6 seconds; scrape down sides. Blend 10 seconds more. Add 4 egg yolks, 2T cognac or rum and 1/2t instant coffee (plus 1/4t cinnamon if desired). Blend 5 seconds or til smooth. Add 4 egg whites; blend at high speed for 1 minute. Spoon into 6 mousse cups and chill a minimum of 1 hour. Serve plain or with Cointreau-flavored whipped cream.

**Jacobson's**  
store for the home  
Woodward at Willits  
Birmingham  
SHOP JACOBSON'S THURSDAY AND FRIDAY EVENINGS 'TIL NINE  
2 HOURS FREE PARKING... WHEN YOU MAKE A PURCHASE

## system cado

Design: Paul Cadovius

customized wall furniture makes every inch count.



Versatility unlimited awaits you in an assortment of units you have to see to believe. Desks... shelves... cabinets... drawers... tables... even a sofa can be mixed and tailored to your exact specifications in Bangkok Teak, Brazilian Rosewood, American Walnut or Light Oak.

Stop in. Examine the luxury and flexibility of System Cado for yourself. Let us know what you want and we will help you find the perfect arrangement. Pick up a free catalog and planning guide. System Cado is designed on the principle that no two people are alike. That's what makes it so special.

## THE SHELF SHOP

1705 S. Woodward Birmingham Phone 647-3580  
14227 Telegraph Saverian Vill. Cir. Phone 335-4560  
24400 Harper St. Clair Shores Phone 775-6128