

Mattress ticking adds freshness to wardrobe

By CHRIS WALDEN

If you have the blue jean blues, if denim's become a drag . . . follow the footsteps of designer Giorgio di Sant' Angelo and add a winning look to your wardrobe with mattress ticking.

The 100 percent cotton fabric repeats itself in dresses, pants and skirts in di Sant' Angelo's spring collection. The look is fresh, sophisticated and ready for play.

Di Sant' Angelo's introduction of the fabric in clothing will undoubtedly start a new craze.

Denim hasn't worn itself out . . . yet. But the jean scene needs some spunk. Di Sant' Angelo provides it.

HIS MATTRESS ticking designs are not merely the tradi-

tional white and blue. Green, red and other bright colors come in stripes. They are matched with go anywhere body suits, worn under, over, day or night.

Di Sant' Angelo lets most of the ticking you see on the body be seen during the day. At night, you'll have to look at your pillow.

For day he designs a two-piece city suit. With vertical stripes, body lines are elongated. Your imagination puts a blouse, body suit or bikini underneath.

CASUAL, COOL dressing comes with a wrap skirt and sleeveless jacket. The skirt is panels of different colored ticking.

Of course, designer clothes are sometimes out of reach . . . and who wants to pay \$200 for a mattress ticking pant suit when for \$1.20 a yard you can make your own.

Most fabric shops carry the fabric. You just apply it to any pattern that suits your taste. Remember to allow for shrinkage when buying and sewing. The fabric, not designed for clothing, is not permanent pressed or sized.

IF YOU'RE still leery of taking the ticking out of the bedroom di Sant' Angelo's past record may be comforting.

A two-time Coty Award winner, his designs have always received rave reviews. His introduction of gypsy dresses and patchwork ensembles typifies his role as an innovative designer.

The di Sant' Angelo thinking is in tune with women . . . and this year he thinks women want to play in something other than faded blue.



The suit for day, comfortable, dressed up or down, Di Sant' Angelo designs the go anywhere look



Giorgio Di Sant' Angelo designs a patchwork skirt with different colors of mattress ticking



Ticking in solid color for day or night, Di Sant' Angelo provides a casual, but sophisticated look

Givenchy
NOUVELLE
BOUTIQUE



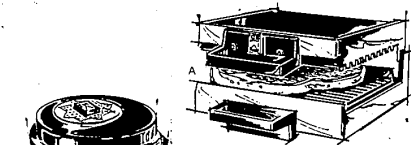
It's a spring thing we're having in the Givenchy Nouvelle Boutique, ours alone in Michigan. . . an informal showing of the day and night collection of Parisian Hubert de Givenchy

Tuesday, March 12
10:00 A.M. to 4:00 P.M.

Everything's coming up springtime. . . the dresses, suits and long gowns, raincoats and accessories designed by the master couturier for the woman of today who values timeless styling and purity of line. Sizes 6-14.

Jacobson's

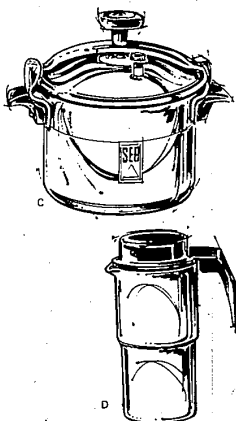
APPAREL STORE
Maple at Bates
Birmingham



SEB electric French cookware

From France, where cuisine is an art, comes SEB cookware, a combination of Old World craftsmanship and the latest scientific innovations. . . the ultimate in kitchen technology. Come see our collection and meet the SEB representative who will be at our Kitchen Shop to illustrate the ease and foolproof results of preparing foods with this remarkable, time-saving cookware.

Thursday, March 14
1:00 P.M. to 4:00 P.M.



A. NON-STICK MINUTE GRILL cooks both sides of a steak at once, twice as fast! Top adjusts for meats up to 2 1/2" thick. 10 1/2" x 9 1/2" steel with red metal top. 44.95

B. SUPER FRY cooks several foods at the same time with the air-tight lid closed, preventing boil-over. Charcoal filter eliminates frying odors. 9 1/2-qt. stainless steel. 59.95

C. SUPER COOKER makes pressure cooking safe and easy, saves cooking fuel and is the only pressure cooker that can be opened under pressure without danger. 6-qt. aluminum. 24.95 6-qt. stainless. 42.95 8-qt. stainless. 47.95

D. PRESSURIZED COFFEEMAKER uses 50% less coffee, averages 6 minutes for 6 cups. Steam pressure forces hot water up through ground coffee for better flavour every time. Stainless steel. 6-cup size. 16.95 9-cup size. 18.95

Jacobson's
store for the home

Woodward at Willits
Birmingham