

*Glen Michaels yellow gold clasp for pearls*

# Alvin's

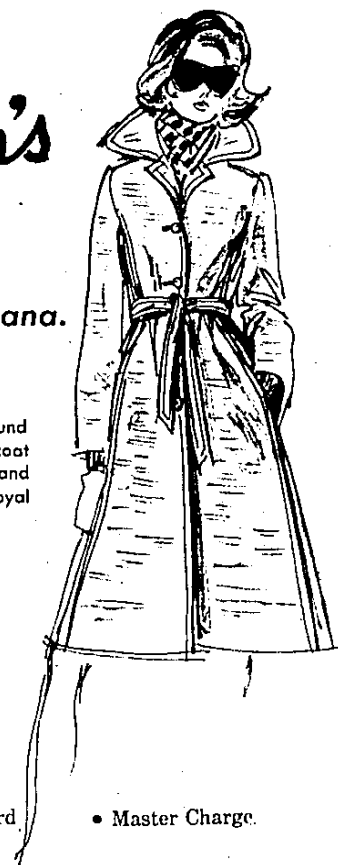
There's one near you!

**Streak Ahead in a  
Weatherbee Coat of Qiana.**

**\$80**

The look of Silk . . . Around town or around the world, this is an ideal Weatherbee coat . . . washable . . . crease-resistant . . . and in colors nobody can ignore . . . red, royal blue and white. Sizes 8-16

*Sizes 8-16*



• Alvin's Charge • BankAmericard • Master Charge.

**PONTIAC**, Huron at Telegraph **ROCHESTER**, 303 S. Main St.  
**OAKLAND MALL**, I-75 at 14 Mile **GENESEE VALLEY MALL**,  
Miller at Linden Rd., Flint **BRIARWOOD**, I-94 at U.S., Ann Arbor

## Before your court appearance, see Sporthaus.

The Don Thomas Sporthaus name is built on taking your fun seriously. Skiing or tennis . . . we make it our business to approach each with the highest degree of professionalism. This means that the clothes, equipment and services available at Sporthaus are genuine and authentic.

Tennis, the game of the 70's is big with Sporthaus too. We have the largest selections, top names and highest quality in clothes and equipment around. And, that goes for every member of your family.

Fashion, fit, fabric and flexibility. These are our standards for tenniswear. Everything is designed in luxury fabrics that work, wash and wear well.



We're open Thurs. and Fri. till  
9. Other days till 6.  
Bloomfield Plaza, Telegraph at  
Maple Road 626-9500  
Somerset Mall, Troy, Big Beaver &  
Coolidge Roads 643-0400

The public is invited  
to shop our  
club locations.  
Franklin Racquet Club  
Square Lake Racquet Club  
Centaur Farms  
Racquet Club

