

# Jury sworn in for murder trial

By MICHAEL CHARLES

PONTIAC—Massive pre-trial publicity surrounding murder charges against two escaped convicts accused of killing a Troy police officer is hampering the selection of a jury to try the case.

Jury selection began in Oakland Circuit Court this week as the prosecution, led by County Prosecutor L. Brooks Patterson, and the defense began screening an initial panel of 90 prospective jurors to hear the evidence against Gordon L. Stockenauer and Joseph Molinari.

The two are accused of murdering Troy P.I. Martin Chivas April 22 while the officer was investigating a break-in at a Troy gas station. Stockenauer

and Molinari, who escaped from a state prison farm near Marquette April 18, are also alleged to have murdered two other persons during their three-day flight through Michigan and Wisconsin.

So great was the publicity given to the escape and murders last spring that virtually all of the 100 jurors assembled in Judge Robert B. Webster's courtroom Monday admitted to some prior knowledge of the case.

MORE THAN a dozen of the jurors excused themselves or were excused by Judge Webster either because of their familiarity with the principals in the case or their self-confessed prejudice against the defendants.

Each juror who claimed prior knowledge was questioned separately by Webster. Patterson and court-appointed defense attorneys James Lawson and Rick Schmidt.

Judge Webster issued an order Monday forbidding attorneys for the prosecution and the defense from making public statements or granting press interviews on the progress of the trial. All questions from newsmen must be made in writing to Webster himself and they are to be limited solely to matters of legal procedure, he said.

In addition, the judge ordered all jurors not to watch or read news accounts of the trial itself.

IN AUGUST, Lawson and Schmidt

requested Webster to grant a change of venue for the trial, claiming all the publicity would prevent the court from empaneling an impartial jury. Although the judge denied that motion to move the trial to another location, he did reserve the right to grant such a change if it is found that an impartial jury cannot be found in Oakland County.

In what was called an "unusual and extraordinary" move, Judge Webster Monday briefly outlined the state's case against Stockenauer and Molinari for the entire 100-juror panel at the request of the defense. After that recital, the judge, attorneys, defendants and reporters were moved to a vacant jury room to begin hearing the initial interviews on the issue of pre-trial publicity.

Jurors who pass that interview will undergo formal voir dire examination in court this week or next. Voir dire (literally, "to say the truth") is the actual legal process by which jurors are selected.

Each defendant will be allowed 20 peremptory (unexplained) challenges and the prosecution 30 (15 for each defendant) during the examination. In addition, both the prosecution and the defense will be allowed an unlimited number of challenges for cause, challenges which must be explained to the court and ruled upon by the judge.

## Attorney will lead business seminar

SOUTHFIELD—Michael M. Cinnamon of Southfield has been selected to lead the planning for the owner of a closely held enterprise seminar to be held Oct. 10 in Traverse City. Cinnamon is a certified public accountant and an attorney. He is also a partner in the firm of Daguanne & Cinnamon.

**MEET DUFFY & DAVE**  
Daugherty Diles  
**CO-AUTHORS OF DUFFY**  
THURSDAY — OCT. 10  
7 p.m. to 9 p.m.  
Have your copy personally autographed  
**bookpeople**  
ORCHARD MALL  
Orchard Lake Rd., N. of Maple  
851-9150

**TEENS LEE**  
...START DRIVING  
**DRIVING SCHOOL**  
559-9884


**LUSSENDEN'S**  
**PLUMBER**

ATONCE WHEN PIPES ARE LEAKING, DO NOT CRY FOR WE'LL BE COMING ON THE FLY!

**ROBERT L. Lussenden**  
**PLUMBING & HEATING**  
Phone MA6-1808  
3030 W. 12 Mile Rd.  
Farmington Hills, Mich.

**Insurance FACTS**

by **Robert H. Bergstrom, CPCU**



Industrial insurance policies are sometimes available to the consumer. The premiums for these are collected weekly, and in person by the salesman. This type of insurance is sometimes offered in large industrial complexes. Chief among the advantages of this type of policy for the consumer is that there is no medical examination. Further, they are designed for the working man, and weekly payments can be adjusted to his or her pay scale.

There are many kinds of insurance policies available to you. To learn just which ones are best for you, why not call the office of BERGSTROM INSURANCE AGENCY, 29700 Orchard Lake Road, Farmington Hills, and let one of our insurance experts help you. We are an independent agency representing several large companies. Whether you need a plan for retirement, mortgage redemption or education, we can set up the right program. We also specialize in business insurance. Call us today at 626-1400.

**INSURANCE FACT:**  
Industrial policies do not develop a cash value until three to five years have elapsed.

**ELECT JOHN CAMPBELL**  
**STATE REPRESENTATIVE**  
64th DISTRICT  
DEMOCRAT

**FOR EFFECTIVE REPRESENTATION**

Paid Political Advertisement


**A Breath of Scotland**

THE CALEDONIA CLUB & NORTHERN IRELAND SERVICE CLUB present a  
**CABARET DINNER DANCE**  
FRIDAY, OCT. 25  
ROMA HALL - Schoolcraft Rd., Livonia

FEATURING  
WORLD FAMOUS  
ROYAL GLANSMEN  
with ALEX FINLAY, comic soloist  
AT 11:00 PM

**Policemen's Ball**  
The Livonia Police Officer Assoc. Presents the  
**22nd Annual Policeman's Ball**  
featuring  
**The Glenn Miller Band**  
and  
**The Family Portrait Orchestra**

**WHEN?** Friday, Oct. 11  
**WHERE?** Roma Hall  
Schoolcraft Rd., Livonia  
Dancing from 9-1  
Tickets - \$15 per couple  
For tickets or information  
Phone 525-3770



## Satellite clinic opened by drugs abuse program

Clinic 05, Providence Hospital's drug abuse treatment and prevention program, is operating a full-time satellite clinic in conjunction with Southfield's Social Service Department.

Temporarily located in a trailer at 24366 Civic Center Drive, the Southfield satellite of Clinic 05 is open 9 a.m. - 5 p.m., Monday through Friday. Group therapy sessions are held from 5-9 p.m. on Tuesday and Thursday.

Clinic 05 is a "people to people" program which helps hard drug addicts and those involved in the soft drug culture to become "drug free" not "temporarily clean," according to Michael Colucci, clinic director. The program also helps the ex-addict to function in the community once he is no longer dependent upon drugs.

Any southern Oakland County resident 15 years of age or older who lives west of Greenfield, is eligible for treatment at the Southfield facility. Families of patients with drug abuse problems from this same service area may receive counseling at the satellite. The main clinic at the hospital treats residents of southern Oakland County who reside east of Greenfield, as well as those who live in Troy.

The program at the satellite clinic stresses intensive group and individual therapy which gives them the opportunity to share their experiences.

**ADDICTS** undergoing drug withdrawal who require methadone or barbiturate detoxification must receive medical treatment at the main clinic in the hospital. However, they can participate in counseling and therapy sessions at the satellite clinic.

Two staff members from the hospital's main clinic have been assigned to the Southfield facility. Social worker Jerry Goorn, ACSW, is satellite supervisor and Jesse Phillips will serve as addiction counselor.

"The objective of the satellite clinic is to bring the Clinic 05 program closer to the community," Goorn explained. "Our aim is also to emphasize preventative programs through schools, churches and other community organizations."

## Providence wins hospital award

Providence Hospital staff members accepted four awards earned in the 18th Annual Search for New Hospital Achievements during a luncheon on Friday, in Traverse City.

The contest is co-sponsored by the Michigan Hospital Association and Michigan Blue Cross. Prizes are given to employees of Michigan health care facilities for their original methods, procedures or devices that have helped their hospitals operate more efficiently, control costs or improve service.

PROVIDENCE received a first award for an entry to improve bed utilization submitted jointly by medical director Joseph A. Rinaldo of Birmingham, administrative assistant David Currin of Southfield, director of admissions Mrs. Juanita Garrett of Detroit, and management engineer John Sommers of Royal Oak. The award carries a \$500 cash prize.

Prizes are given to employees of Michigan health care facilities for their original methods, procedures or devices that have helped their hospitals operate more efficiently, control costs or improve service.

### B'nai B'rith gives awards

The Annual Awards Dinner of B'nai B'rith's Oakland Century Lodge will be held at 7 p.m. Thursday, Oct. 10 at Adat Shalom Synagogue, Farmington.

An invitation has been extended to the entire Metropolitan Detroit B'nai B'rith Council to honor the winner of the lodge's "Spirit of B'nai B'rith Award" for 1973-74.

Harold Zuker of the Henry Morgenthau Lodge has been selected to receive the award.

In his honor the Hyman Crystal Memorial Scholarship will be presented to a Jewish student from this area.

Principle speaker will be International Vice-President Sam J. Stone who will speak on "B'nai B'rith in the Mainstream of Jewish Life."

Clinic 05 also provides vocational services, referrals, evaluations, psychological testing, medical care, laboratory analysis of client physicals, community education and emergency counseling.

**GOSHORN SAID** that speakers are available to talk to any group in the area, and that clinic staff members are also available for consultations with individuals or referral agencies.

In addition, the satellite will work closely with the Southfield Social Service Department and with the Southfield Youth Services Bureau to identify and help those with drug abuse problems.

Information on the satellite clinic and its programs may be obtained by calling 354-9527.

Clinic 05 was established under a National Institute of Mental Health grant. It is also funded by the State Department of Public Health and Providence Hospital.

plug-in locations for the cables connecting the sensors to the monitor.

Grant's entry involved the introduction of a relative flow gauge to check suction equipment. The gauge enables maintenance personnel to check the complete system on more than 50 suction units in less than four hours.

## Would you spend \$99.50 to save \$30,000. OR MORE?

It sounds crazy, but most people haven't spent one penny to protect their most important investment—their home—from disaster.

Your home is your most valuable possession. Like most homes in the suburban U.S., it's probably worth \$30,000 or more. And yet it's possible that you haven't taken even the smallest step to protect your home and family against the ever-present danger of fire!

IT CAN HAPPEN TO YOU! Last year, over two and one half million fires struck American homes. Statistics show the average family will experience one fire every generation that is serious enough for the fire department to respond. Gambling against the possibility of fire is a poor gamble indeed... especially when you can buy reliable protection against fire for less than you'd pay for a portable TV set or a small stereo!

### Westinghouse RESIDENTIAL SMOKE ALARM

In the case of fire in the home, the Westinghouse residential smoke alarm "buys" time by sensing smoke and sounding a loud alarm before smoke reaches a dangerous concentration. Whether it's 3:00 A.M. or 3:00 P.M., you and your family are immediately alerted to the danger. This lifesaving warning from the Westinghouse residential smoke alarm could make the difference between a major tragedy or a minor emergency that can be handled! That's the basic reason why more and more building codes are requiring smoke detectors in new residential units.

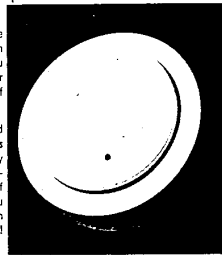
You can easily install the Westinghouse residential smoke alarm in minutes. Just mount it to a wall, then plug it in (permanent connection model also available). It blends with any decor. It can be tested at any time.

You'll always know that it's protecting you and your family against the danger of fire in the home.

Don't gamble with everything important to you... call us today and order your Westinghouse lifesaving residential smoke alarm!

## Westinghouse Security Systems of Southeast Michigan

AUTHORIZED DISTRIBUTOR OF WESTINGHOUSE SECURITY SYSTEMS  
38221 PLYMOUTH RD., LIVONIA 464-3700



Meets Federal Standards for Single Station Residential Smoke Detectors. Listed by Underwriters Laboratories, Inc.

### Free Fire Extinguisher With Every Purchase



To complete your fire protection, this Series Q-Mate Foam Fire Extinguisher checks fire fighting from up to 10 feet to extinguish oil, grease, or gasoline fires. It's perfect for kitchen, garage, or basement.

