

# Put your best foot forward in foyer



GOOD FIRST IMPRESSION begins in the foyer. The European ceramic tile-patterned no-wax floor in the foyer is contrasted by the living room's thick solid color carpeting.

The old saw "first impressions count" goes for houses as well as people. So, when you redecorate your home, put your best foot forward in the place people see first, the foyer.

Many older homes have entrance halls or foyers separated from the living room. Owners of newer homes without a separate foyer sometimes use tall furnishings like shelves and bookcases to create a small foyer off the living room.

In either case, the foyer should be carefully decorated; and a good starting place is the floor.

TRADITIONAL "natural" or "hand-made" materials like random stone, cobblestone, slate, quarry tile, mosaic tile and brick have long been favorites for foyer floors because of their beauty and durability. Unfortunately, they're often too costly for most household budgets.

Nonetheless, the advantages of these traditional floors needn't be sacrificed. Their looks and toughness have been captured in modern resilient floors at a fraction of the cost.

Many colors in resilient floors are styled to match traditional materials. Prices range from economical vinyl asbestos tile to premium quality no-wax sheet floors (the types that comes in wide rolls).

But don't feel trapped by tradition when you pick your foyer floor. With a careful eye for color coordination and common sense, exotic patterns duplicating the elegance of hand-tooled leather and Italian or Dutch glazed ceramic tiles can be used tastefully in the foyer.

SOME PEOPLE feel that carpeting the foyer creates a "lush" atmosphere and helps keep tracked-in dirt out of carefully cleaned living rooms. But to retain that plush appearance, a foyer carpet requires vacuuming almost daily, especially during bad weather, as well as frequent shampooing. Most residential carpeting won't hold up under prolonged exposure to heavy foyer traffic.

Resilient floors are better suited to foyer use because they are more durable and they shed most tracked-in grime with simple mopping. A mat or a rug at the doorway takes care of shoe wiping. (Don't use the foam-backed kind though; synthetic foam can discolor the floor).

When picking a foyer floor, it's helpful to remember that the foyer should be the introduction to the home's

overall decor. Keeping this in mind makes color selection easier.

IS YOUR HOME decorated in light, bright colors? If so choose a bright, cheerful foyer floor and avoid muted

earth tones like beige, olive and clay.

On the other hand, if your interior is done in one of today's popular "quiet" color schemes like burnt orange and blue, camel and navy, or

green and rust, earth tone floors will fill the bill perfectly.

Tile pattern floors are especially attractive in foyers when coordinated with adjoining carpet in a solid color.

## RESIDENTIAL GROWTH FORCES SALE!

We have curtailed planting new material for past 2 and 3 years, knowing that we would be pushed out of our 83 acres as building growth expanded. SO COME, SEE and SAVE on THOUSANDS OF TREES and SHRUBS. BUY NOW and GET THE BEST SELECTION.

ALL SHADE TREES

50% OFF

ALL EVERGREENS  
FLOWERING TREES  
and SHRUBS ON LOT

40% OFF

## NOW IS THE TIME TO PLANT!

20,000 TREES to CHOOSE FROM! PICK YOUR OWN TREE NOW WHILE THEY ARE STILL IN LEAF IN ORDER TO VISUALIZE THEIR TRUE SHAPE AND THEIR AUTUMN COLORS.

Stop at office for list for location of trees you are interested in. Browse around and select and tag the tree you wish to purchase. No trees tagged without a deposit.

**Folker's**  
nursery & Landscaping

45775 PROCTOR RD., PLYMOUTH

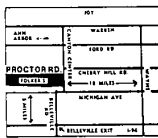
OFF CANTON CENTER BET. CHERRY HILL  
AND MICHIGAN AVE.

455-4020

Hours: Daily 9-5:30 p.m.

Sunday 9-5 p.m.

GIFT CERTIFICATES  
AVAILABLE  
for Year-Round  
"Living" Gifts



## Water heater eats energy

The home appliance that uses the most energy is not your range, freezer or washing machine. It's your water heater.

"Heating water uses more energy than any other household activity except heating space," says Jim Boyd, extension housing specialist at Michigan State University. "Efficient selection, installation and operation of your water heater are three ways you can pare pennies off your utility bill."

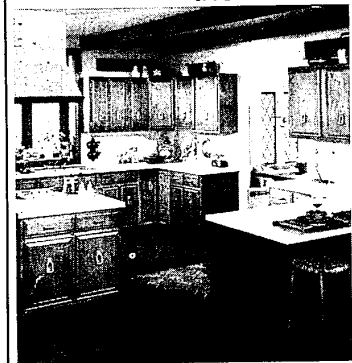
Choosing the right size water heater for your family assures you of hot water when you need it. Figure on 15 to 25 gallons of hot water per day per person in your family.

"A rapid-recovery water heater makes it possible for you to get by with a smaller capacity tank. It also uses more energy."

Scheduling baths, showers, dishwashing and laundry so they don't conflict gives your water heater time to recover between demands for hot water.

Whenever possible, install your water heater as close as you can to major points of use. Every 25 feet of water pipe wastes the heat used to warm a gallon of water every time you turn on a faucet. Even short lengths of pipe should be insulated to minimize heat loss.

# don't move remodel the Kitchen



A NEW KITCHEN for the HOLIDAYS  
Choose from 3 Major Brands  
TAPPAN--SAVE 60%  
LIVONIA STORE ONLY

RAYGOLD--SAVE 50%

HAAS--SAVE 30%

MASONITE 100 OFF 4'x8'

PRE-FINISHED PANELS BUNGALOW 4'x8' 269  
• LITE • MED. • DARK

## WHEN WINTER TAKES HOLD Be Ready

**OWENS CORNING FIBERGLAS INSULATION**

**KRAFT FACED**  
3 1/2" x 15" - 70 sq. ft.  
**569**  
ROLL

**6" BLANKET**  
15" o.c. - 40 sq. ft.  
**769**  
ROLL

**ROCKWOOL**  
**229**  
BAG

DO IT NOW--SAVE

**ROOFING**

**SELF SEALING ASPHALT SHINGLES**  
White or Black  
**543**  
BUNDLE  
Other colors available

**FURRING**  
1"x3"  
8' **39c** ea.

**2"x2"-8" FURRING**  
**69c** ea.

**2x4-8 PREMIUM K.D. STUDS 89c** ea.

**DOORS-REJECTS-SECONDS** LOW AS **199** ea.

**1"x12" Shelving** #3 POND. PINE **19c** ea.

**Pre-Finished EVANS Paneling**

**HONEY** 4x7 399 4x8 499

**WILDERNESS BIRCH** 4x8 599

**ANTIQUE BIRCH** 4x8 599

**PECAN FINISH** 4x8 699

**RUSTIC CYPRESS** 4x8 799

**RUSTIC BIRCH** 4x8 899

**NATURAL HICKORY** 4x8 899

OVER 50,000 PANELS IN STOCK--CHOOSE FROM OVER 60 STYLES

**FAMOUS NAME BRAND TILE**

**ARMSTRONG** 2"x4" Chaperone 1.29 ea.

**OWENS CORNING** Pebble White 2"x4"-1.49 ea.

**CELOTEX** 12"x12" White ECON. 9 1/2" ea.

**CLEARANCE BUY NOW--SAVE 25% ON ALL SIZES IN OUR STOCK**

**20c OFF DRY WALL**

PRICES LISTED  
3/8" 199 1/2" 219  
4x7 199 219  
4x8 219 239  
SPECIAL--WITH THIS COUPON ONLY.

**PLYWOOD** 4'x8' GOOD-1-SIDE 25-UP

1/4" 599 599  
3/8" 799 799  
1/2" 899 899  
3/4" 999 999

**PARTICLE BOARD** 4'x8' UNDERLAYMENT 25-UP

3/8" 299 299  
1/2" 299 299  
3/4" 299 299

5/8" 299 EA.

**PLYSCORD** 4'x8' CD-X 25-UP

3/8" 499 499  
1/2" 799 799  
3/4" 999 999

1/2" 499

**LAUAN UNDERLAYMENT**

The Solid Core Underlayment

1/4" 499  
4'x8" 499

**Clearance Priced REDWOOD**

	6'	8'	10'	12'	14'	16'
4	53	84	105	126	147	168
6	35	126	158	189	221	252
8	132	176	220	264	308	352
10	198	264	330	396	462	528
12	272	363	453	544	635	725

2"x4"-8' REDWOOD CLOSE-OUT Reg. 1.69 NOW **139**

4"x8" REDWOOD CLOSE-OUT Reg. 89c **65c** ea.

**REDFORD CASHWAY LUMBER**

DIVISION OF ERB LUMBER

	2'x4'	2'x6'	2'x8'	2'x10'	2'x12'	4'x4'
6'	82	105	152	188	306	236
7'	75					
8'	89	140	203	251	408	283
10'	119	170	260	322	520	387
12'	151	239	379	458	680	472
14'	177	279	433	605	742	532
16'	218	343	470	678	816	635

ALSO LONGER LENGTHS AVAILABLE

**ROYAL OAK** 548-2153  
803 S. Main Street  
Corner of Lincoln  
810-530 DAILY FRI. TILL 8:30

**LIVONIA** 261-5110  
11970 FARMINGTON RD.  
Between Schoolcraft & Plymouth  
10-11 A.M. to 5 P.M.  
10-11 A.M. to 5 P.M.

**WARREN** 775-7000  
24260 Schoenherr Rd.  
Just South of 10 Mile Rd  
810-530 DAILY FRI. TILL 8:30